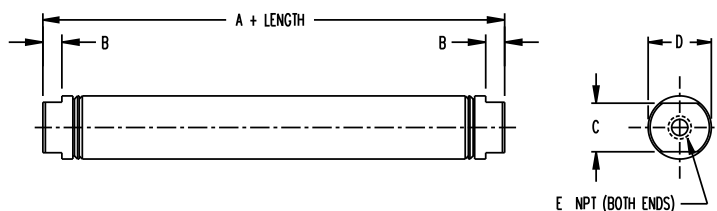


# Bimba Accessories—Air Reservoirs

- Type 304 Stainless Steel Body
- Rated 250 PSI
- Aluminum Alloy Porting Ends

Enter Stroke Length as 3rd Digit



BORE	MODEL NO.	VOL. (CU. IN.)	A	B	C	D	E	PRICE
<b>3/4"</b>	<b>D-1022-A-</b> <input type="checkbox"/>	.39 cu. in. plus .44 per inch of length	1.938	.187	.625	.813	1/8" NPT	<b>\$7.55</b> BASE PRICE Add \$.90 per inch of stroke
	<b>D-1500-A-</b> <input type="checkbox"/>	.99 cu. in. plus .89 per inch of length	2.375	.187	.875	1.125	1/8" NPT	<b>\$8.35</b> BASE PRICE Add \$1.10 per inch of stroke
<b>1-1/16"</b>	<b>D-27715-A-</b> <input type="checkbox"/>	1.38 cu. in. plus 1.22 per inch of length	1.38	.250	.875	1.333	1/8" NPT	<b>\$15.95</b> BASE PRICE Add \$1.25 per inch of stroke
	<b>D-5096-A-</b> <input type="checkbox"/>	1.91 cu. in. plus 1.77 per inch of length	2.250	.250	.875	1.562	1/8" NPT	<b>\$18.75</b> BASE PRICE Add \$1.65 per inch of stroke
<b>1-1/4"</b>	<b>D-2485-A-</b> <input type="checkbox"/>	4.22 cu. in. plus 3.14 per inch of length	2.875	.312	1.250	2.080	1/4" NPT	<b>\$24.40</b> BASE PRICE Add \$2.00 per inch of stroke
	<b>D-11846-A-</b> <input type="checkbox"/>	7.04 cu. in. plus 4.91 per inch of length	2.875	.312	1.750	2.610	1/4" NPT	<b>\$39.35</b> BASE PRICE Add \$2.60 per inch of stroke
<b>1-1/2"</b>	<b>D-17469-A-</b> <input type="checkbox"/>	9.90 cu. in. plus 7.07 per inch of length	3.19	.312	2.00	3.125	3/8" NPT	<b>\$51.60</b> BASE PRICE Add \$3.30 per inch of stroke
	<b>D-2485-A-</b> <input type="checkbox"/>	4.22 cu. in. plus 3.14 per inch of length	2.875	.312	1.250	2.080	1/4" NPT	<b>\$24.40</b> BASE PRICE Add \$2.00 per inch of stroke
<b>2"</b>	<b>D-11846-A-</b> <input type="checkbox"/>	7.04 cu. in. plus 4.91 per inch of length	2.875	.312	1.750	2.610	1/4" NPT	<b>\$39.35</b> BASE PRICE Add \$2.60 per inch of stroke
	<b>D-17469-A-</b> <input type="checkbox"/>	9.90 cu. in. plus 7.07 per inch of length	3.19	.312	2.00	3.125	3/8" NPT	<b>\$51.60</b> BASE PRICE Add \$3.30 per inch of stroke
<b>2-1/2"</b>	<b>D-11846-A-</b> <input type="checkbox"/>	7.04 cu. in. plus 4.91 per inch of length	2.875	.312	1.750	2.610	1/4" NPT	<b>\$39.35</b> BASE PRICE Add \$2.60 per inch of stroke
	<b>D-17469-A-</b> <input type="checkbox"/>	9.90 cu. in. plus 7.07 per inch of length	3.19	.312	2.00	3.125	3/8" NPT	<b>\$51.60</b> BASE PRICE Add \$3.30 per inch of stroke
<b>3"</b>	<b>D-11846-A-</b> <input type="checkbox"/>	7.04 cu. in. plus 4.91 per inch of length	2.875	.312	1.750	2.610	1/4" NPT	<b>\$39.35</b> BASE PRICE Add \$2.60 per inch of stroke
	<b>D-17469-A-</b> <input type="checkbox"/>	9.90 cu. in. plus 7.07 per inch of length	3.19	.312	2.00	3.125	3/8" NPT	<b>\$51.60</b> BASE PRICE Add \$3.30 per inch of stroke